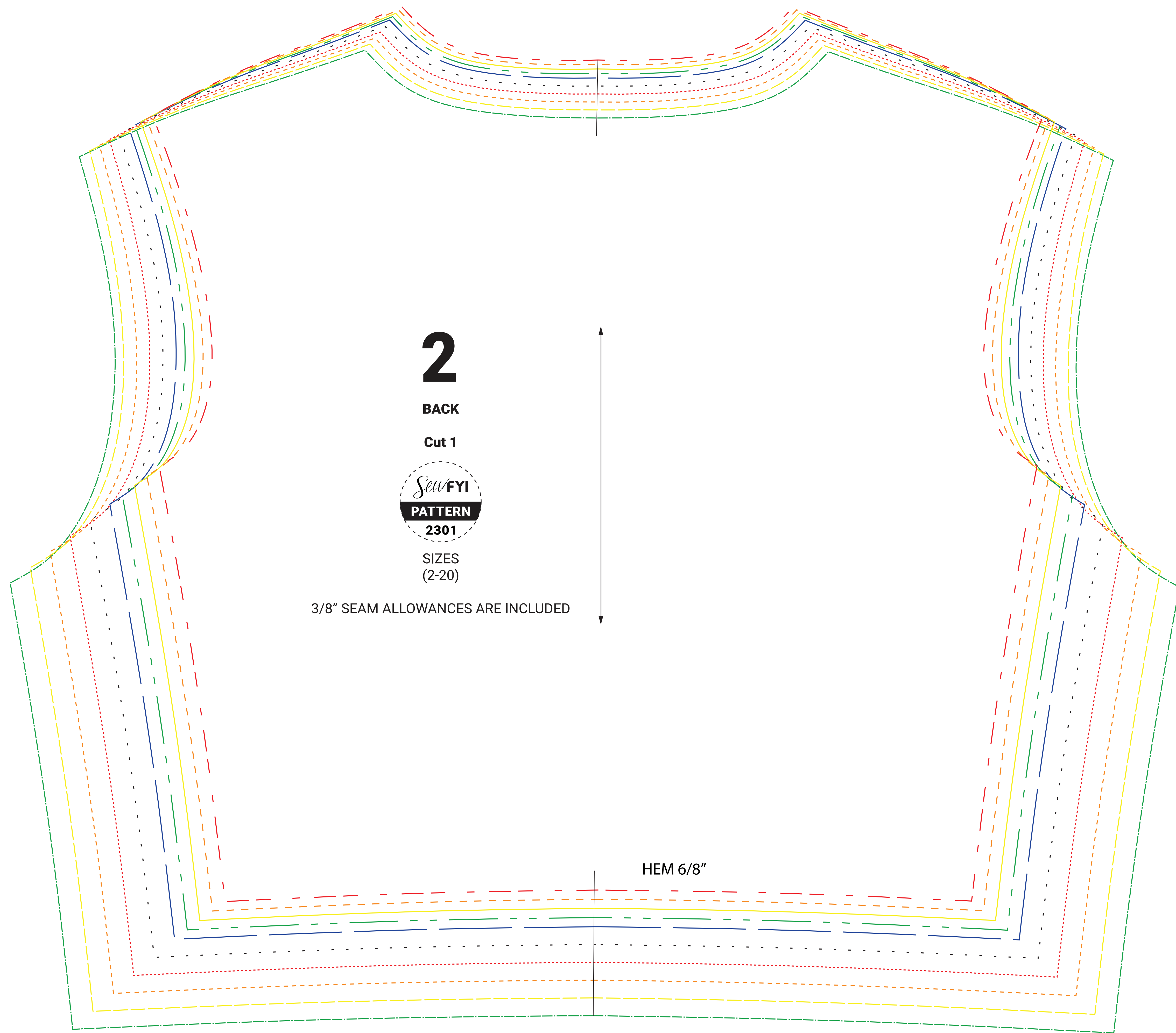




T-Shirt with C-Ring
 Materials:
 1. Suggested fabric: Light-weight knit fabric
 2. C-Ring

Test Square
 Check this box measures
 2 inch x 2 inch



2

BACK

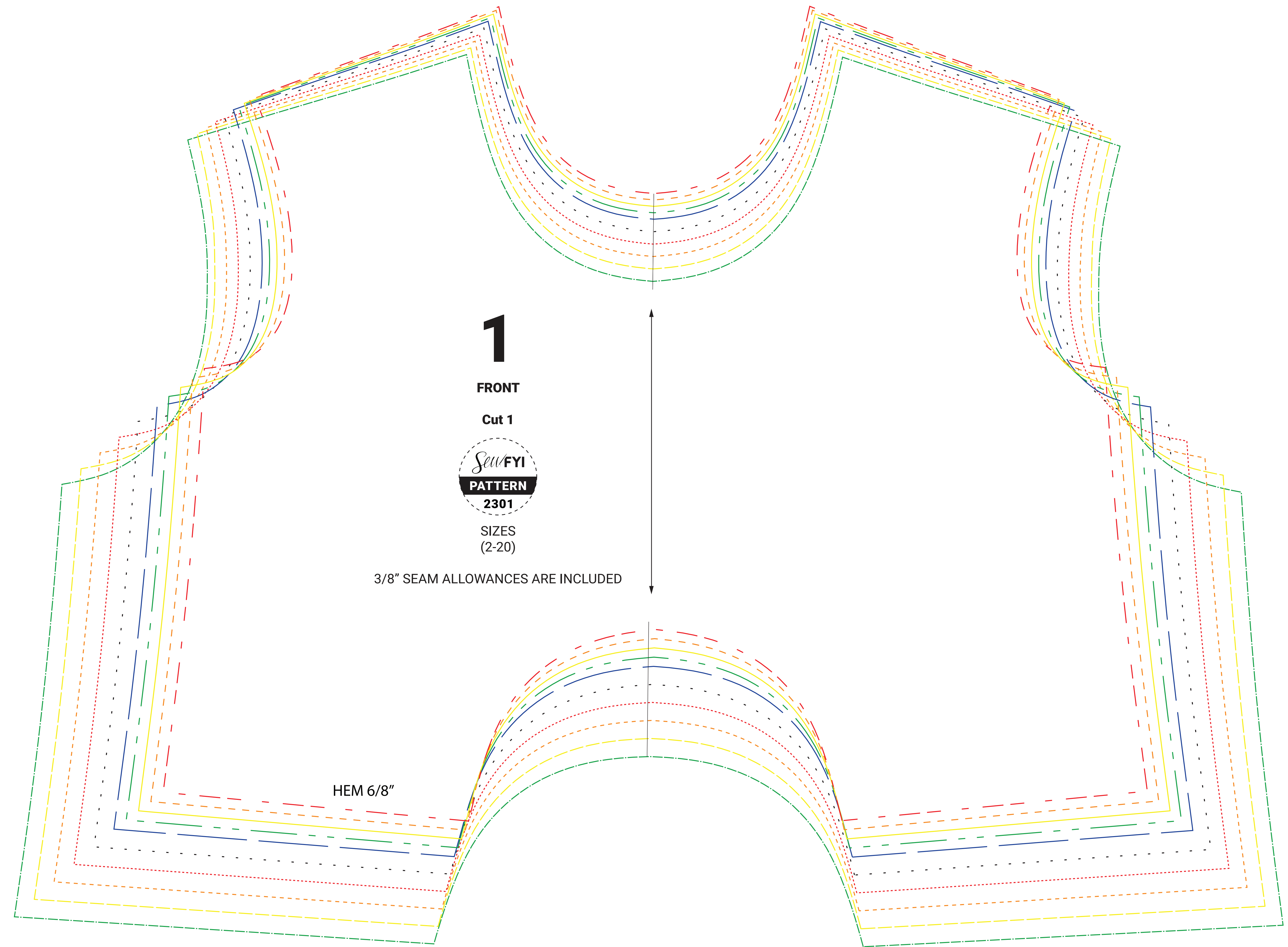
Cut 1



SIZES
(2-20)

3/8" SEAM ALLOWANCES ARE INCLUDED

HEM 6/8"



1

FRONT

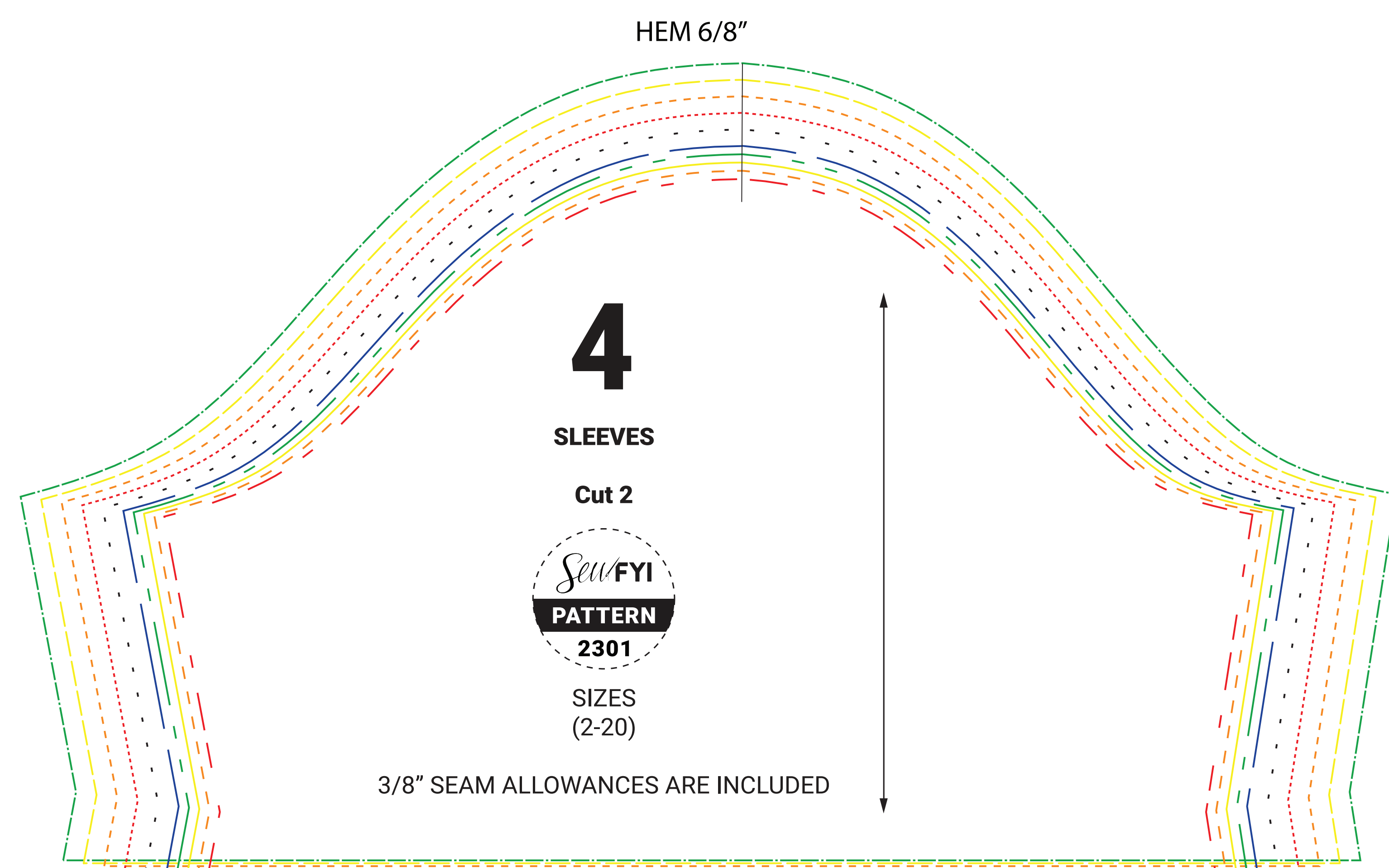
Cut 1



SIZES
(2-20)

3/8" SEAM ALLOWANCES ARE INCLUDED

HEM 6/8"



4

SLEEVES

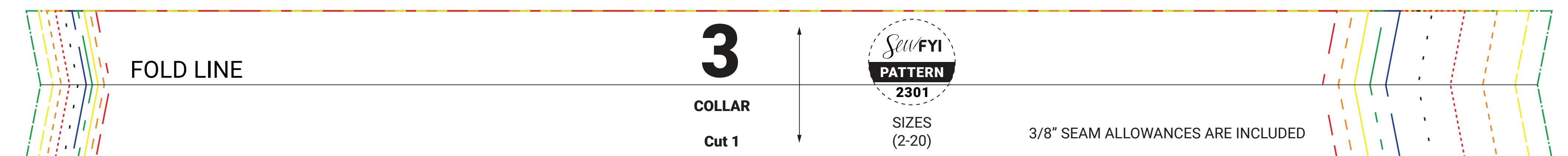
Cut 2



SIZES
(2-20)

3/8" SEAM ALLOWANCES ARE INCLUDED

HEM 6/8"



3

COLLAR

Cut 1



SIZES
(2-20)

3/8" SEAM ALLOWANCES ARE INCLUDED

FOLD LINE

HEM 6/8"