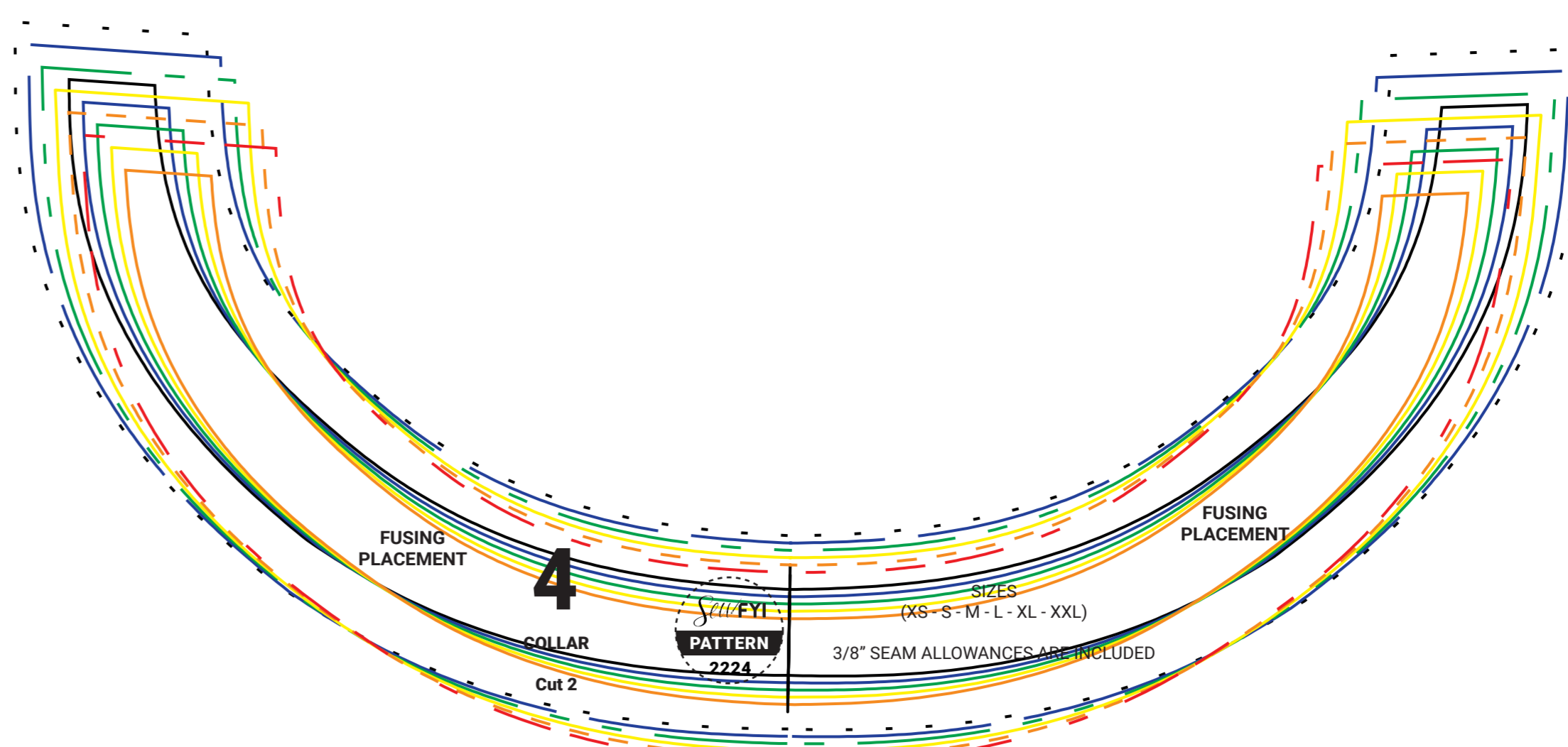




Cutout Dress
Materials:
 1. Suggested fabric: Light-weight fabric
 2. 1/4" Elastic
 3. Buttons
 4. Fusing

Test Square
 Check this box measures
 2 inch x 2 inch



1

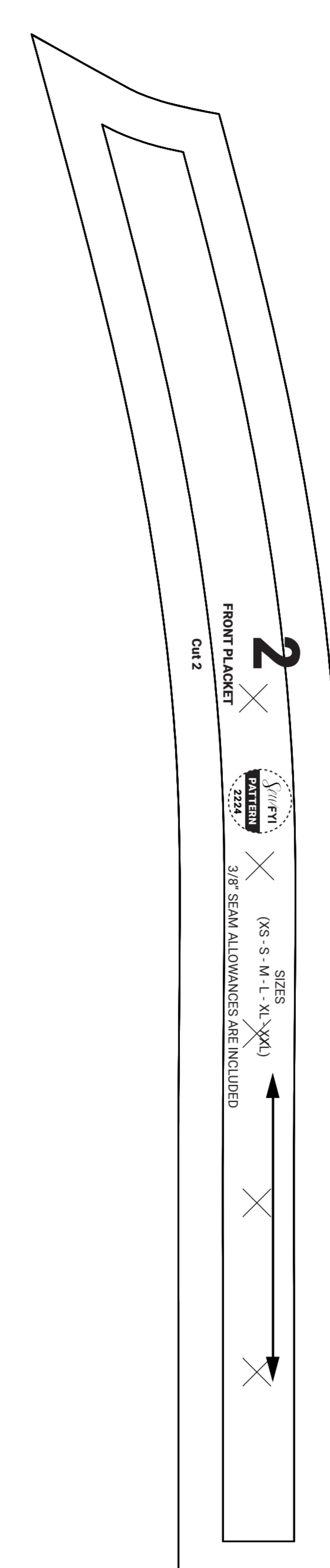
FRONT

Cut 1

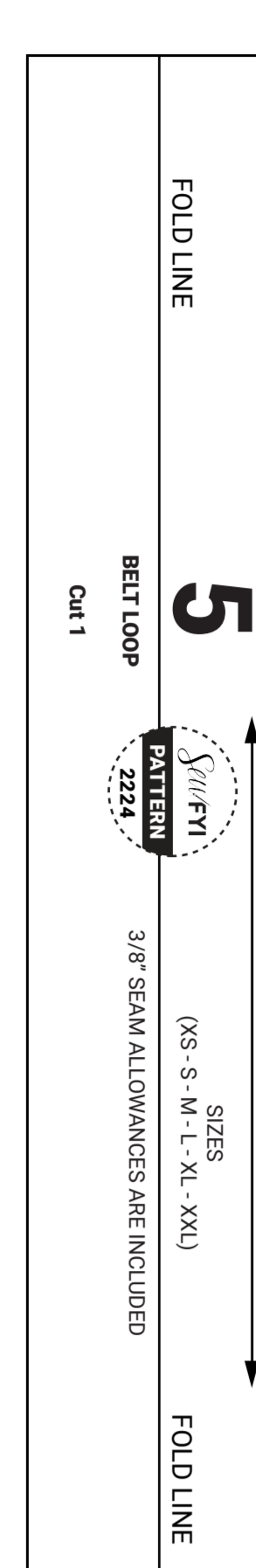


SIZES
(XS - S - M - L - XL - XXL)

3/8" SEAM ALLOWANCES ARE INCLUDED



2



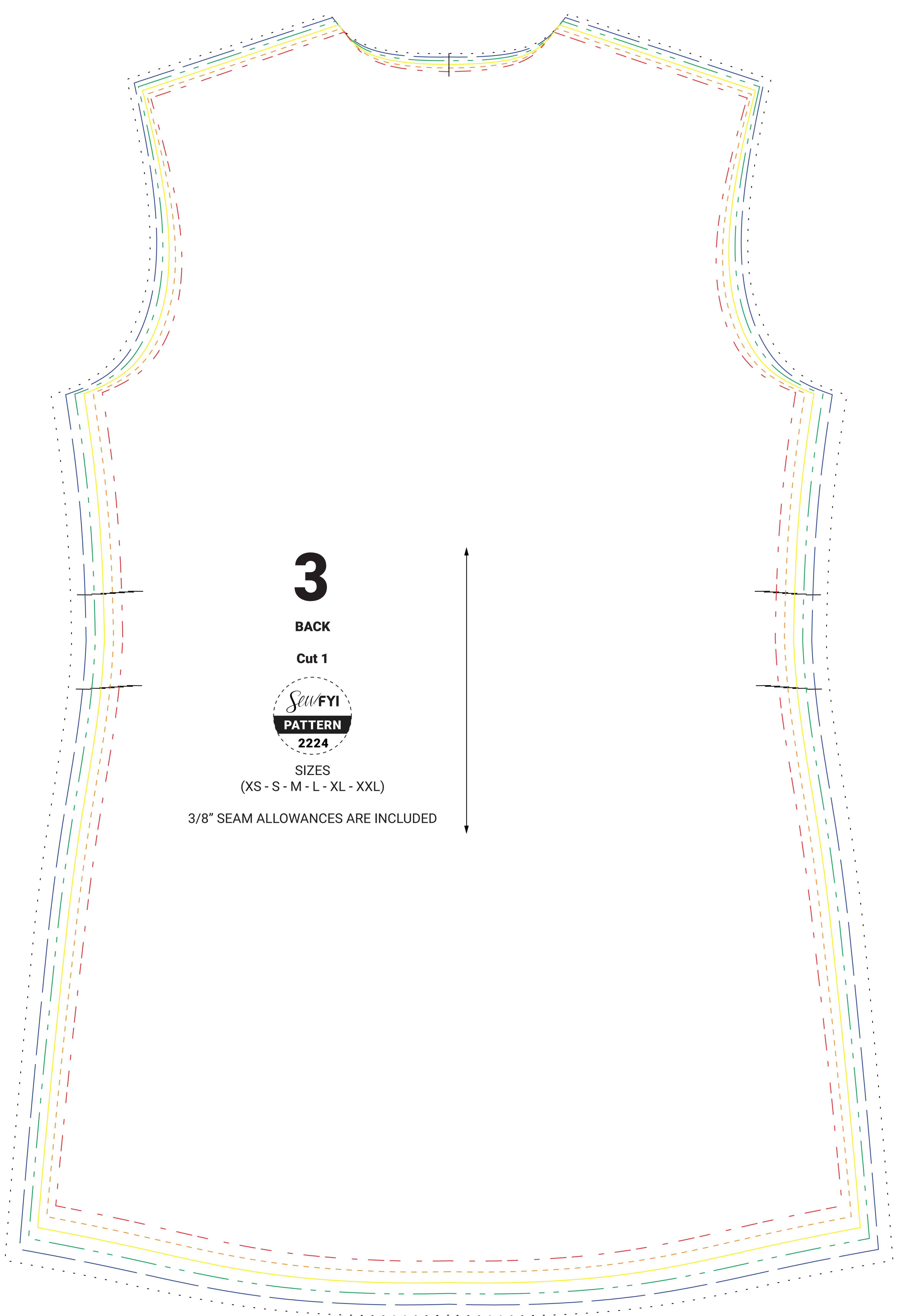
5

BELT

Cut 1

3/8" SEAM ALLOWANCES ARE INCLUDED

FOLD LINE



3

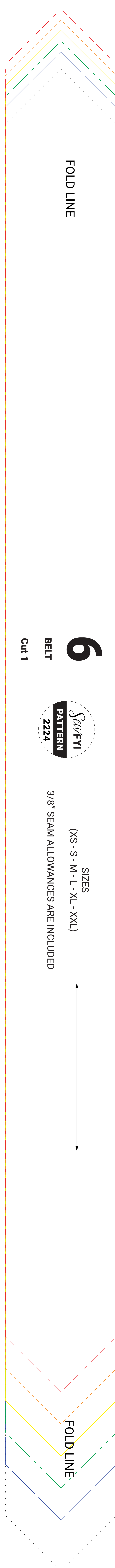
BACK

Cut 1



SIZES
(XS - S - M - L - XL - XXL)

3/8" SEAM ALLOWANCES ARE INCLUDED



FOLD LINE

FOLD LINE

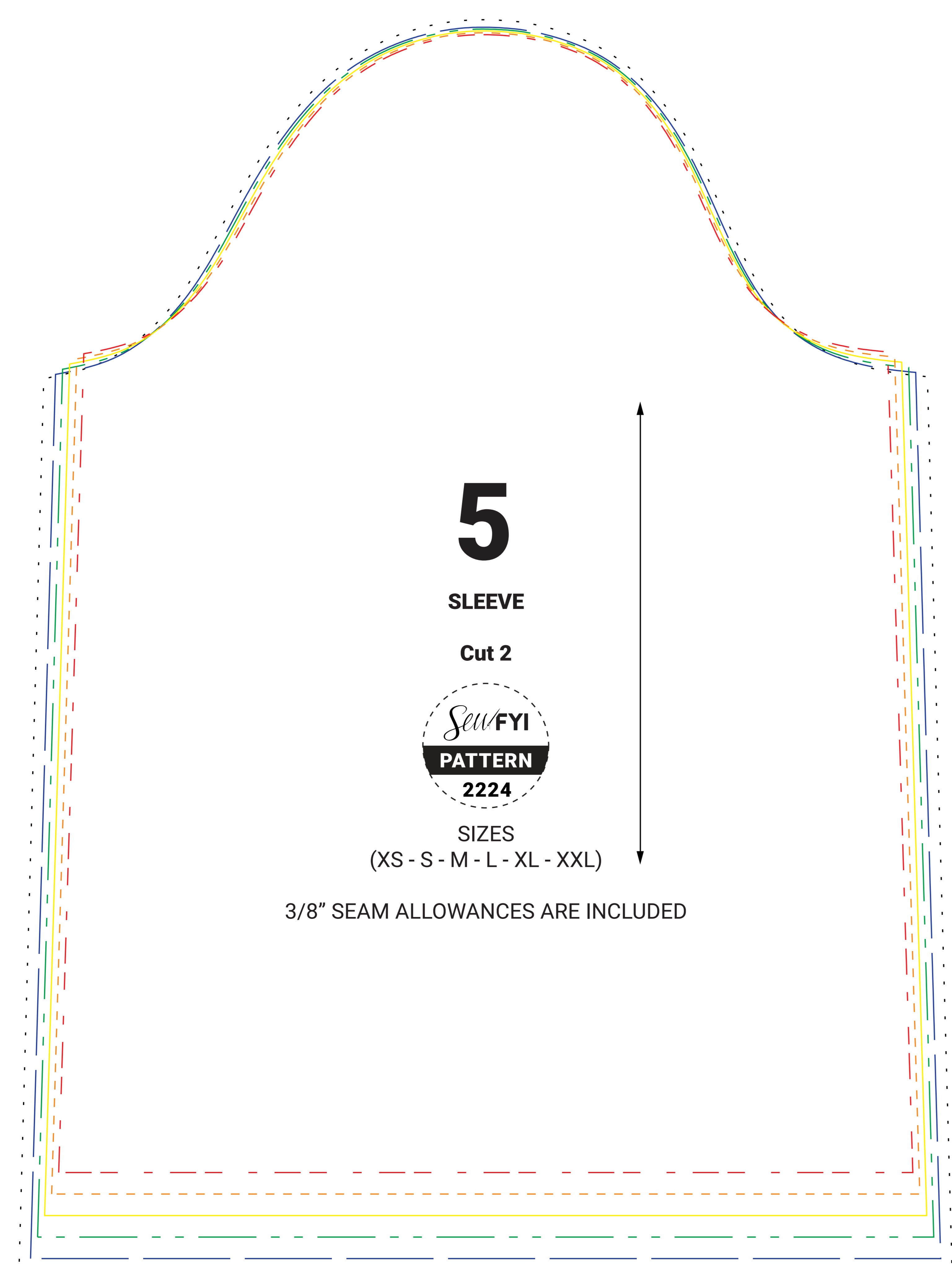
6

BELT

Cut 1

3/8" SEAM ALLOWANCES ARE INCLUDED

SIZES
(XS - S - M - L - XL - XXL)



5

SLEEVE

Cut 2



SIZES
(XS - S - M - L - XL - XXL)

3/8" SEAM ALLOWANCES ARE INCLUDED