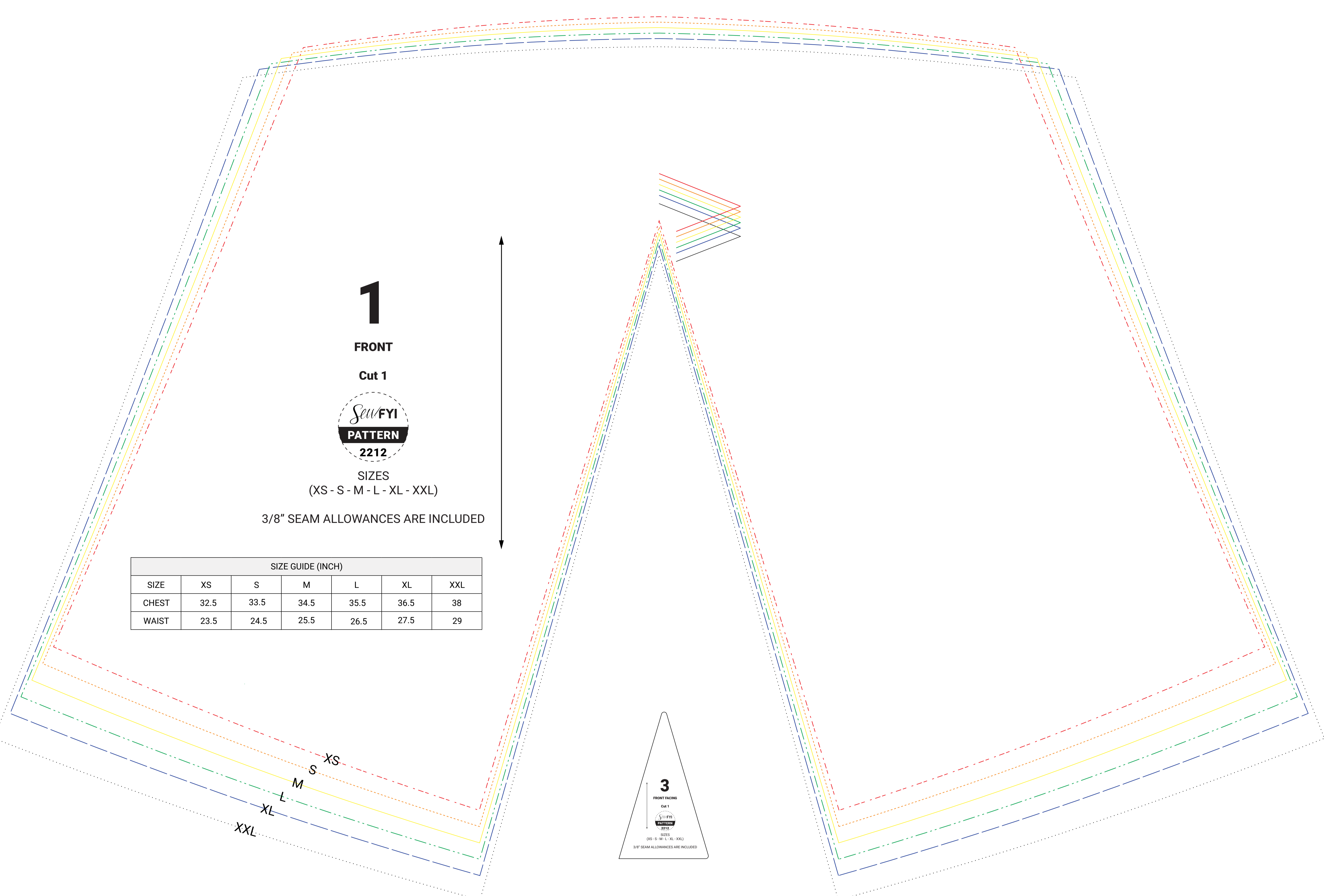




**Crisscross Strap Top**

- Materials:**  
 1. Suggested fabric: Light-weight woven fabric  
 2. Elastic at 1/4" width (optional)

**Test Square**  
 Check this box measures  
 2 inch x 2 inch



**1**

**FRONT**

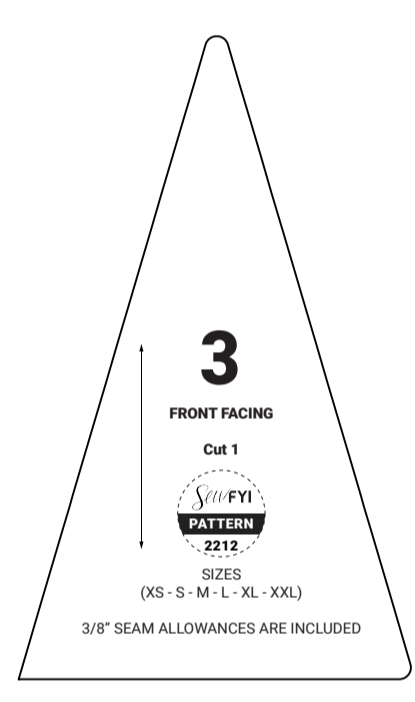
**Cut 1**



**SIZES**  
(XS - S - M - L - XL - XXL)

3/8" SEAM ALLOWANCES ARE INCLUDED

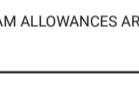
SIZE GUIDE (INCH)						
SIZE	XS	S	M	L	XL	XXL
CHEST	32.5	33.5	34.5	35.5	36.5	38
WAIST	23.5	24.5	25.5	26.5	27.5	29



**3**

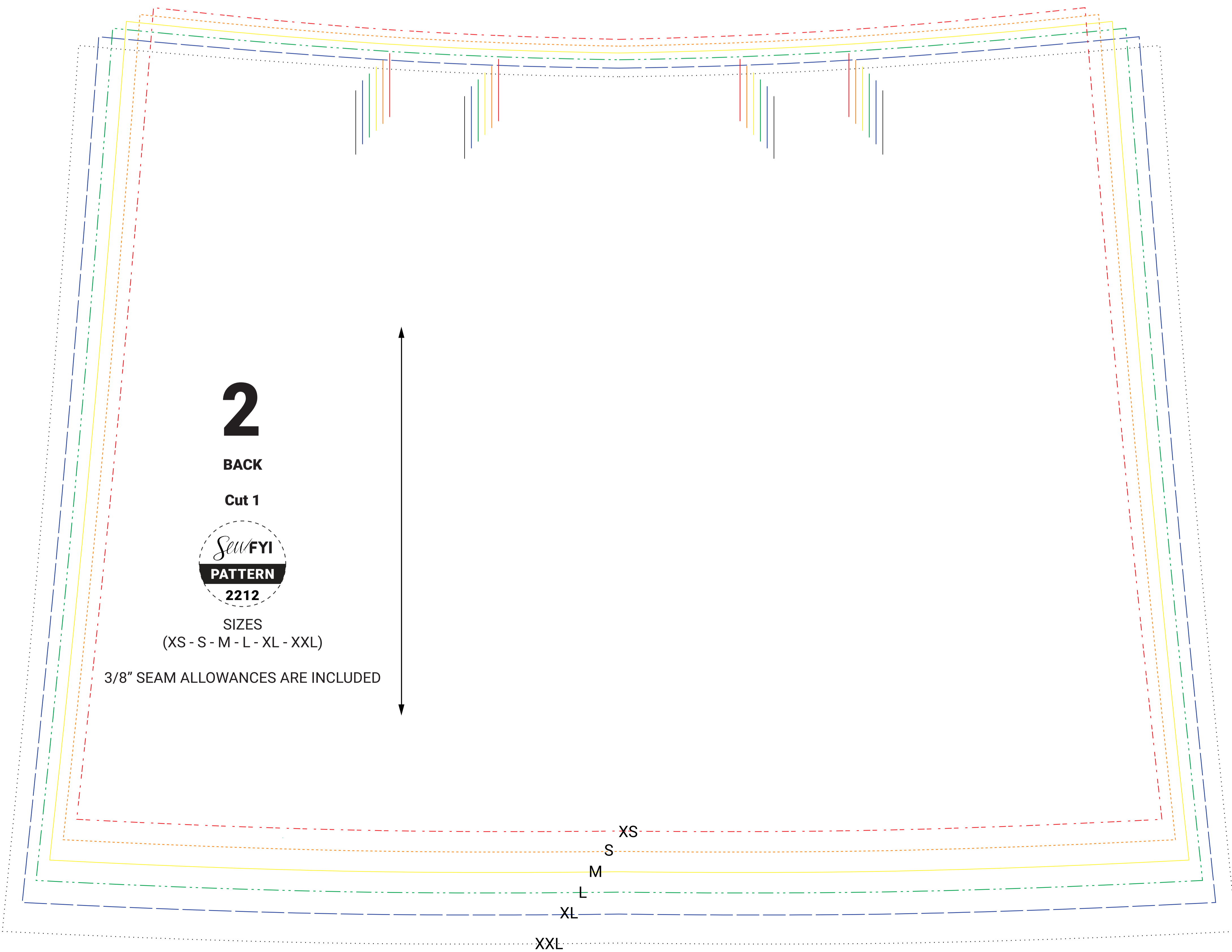
**FRONT**

**Cut 1**



**SIZES**  
(XS - S - M - L - XL - XXL)

3/8" SEAM ALLOWANCES ARE INCLUDED



**2**

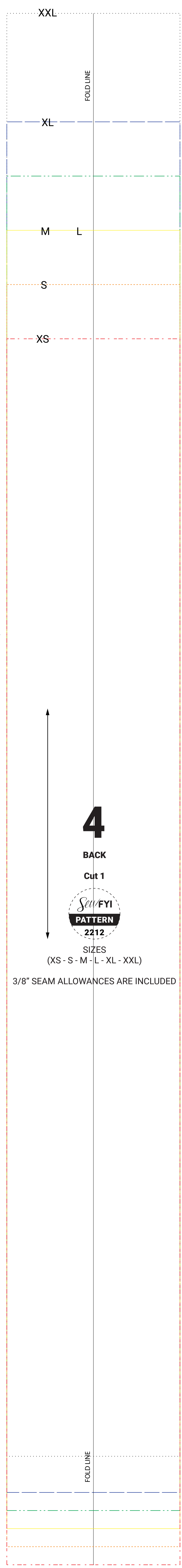
**BACK**

**Cut 1**



**SIZES**  
(XS - S - M - L - XL - XXL)

3/8" SEAM ALLOWANCES ARE INCLUDED



**4**

**BACK**

**Cut 1**



**SIZES**  
(XS - S - M - L - XL - XXL)

3/8" SEAM ALLOWANCES ARE INCLUDED