



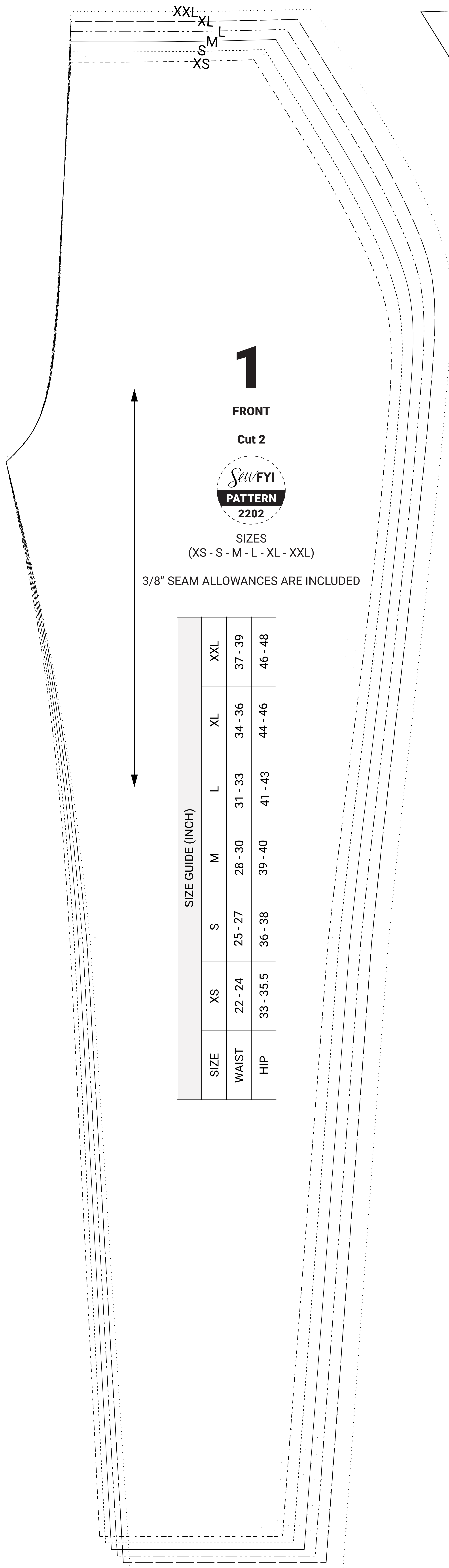
Jogger Pants

- Materials:**
1. Suggested fabric: French Terry or Jersey with 2x2 Ribs body cuff.
 2. 1 1/2" Elastic
 3. 1/2" Drawstrings
 4. 1/2" Eyelets (optional)

Test Square

Check this box measures

2 inch x 2 inch



1

FRONT

Cut 2



SIZES
(XS - S - M - L - XL - XXL)

3/8" SEAM ALLOWANCES ARE INCLUDED

SIZE GUIDE (INCH)		XS	S	M	L	XL	XXL
SIZE		XS	S	M	L	XL	XXL
WAIST		22 - 24	25 - 27	28 - 30	31 - 33	34 - 36	37 - 39
HIP		33 - 35.5	36 - 38	39 - 40	41 - 43	44 - 46	46 - 48



2

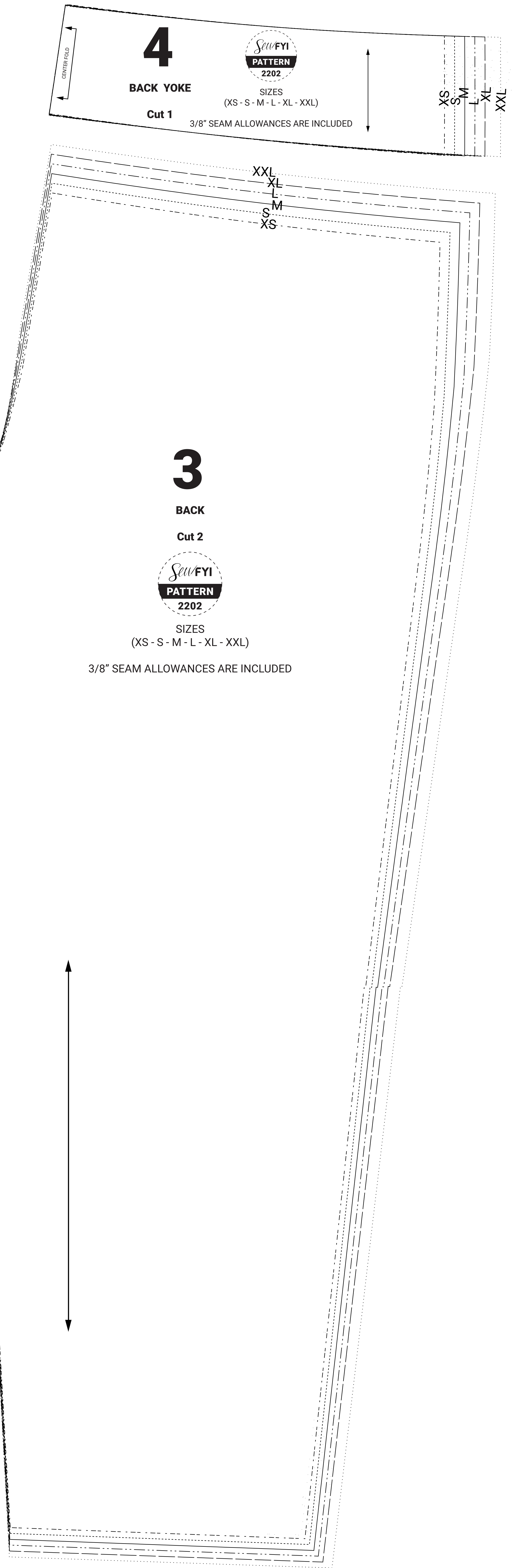
FRONT SIDE

Cut 2



SIZES
(XS - S - M - L - XL - XXL)

3/8" SEAM ALLOWANCES ARE INCLUDED



4

BACK YOKE

Cut 1

3/8" SEAM ALLOWANCES ARE INCLUDED



SIZES
(XS - S - M - L - XL - XXL)

3

BACK

Cut 2



SIZES
(XS - S - M - L - XL - XXL)

3/8" SEAM ALLOWANCES ARE INCLUDED

