

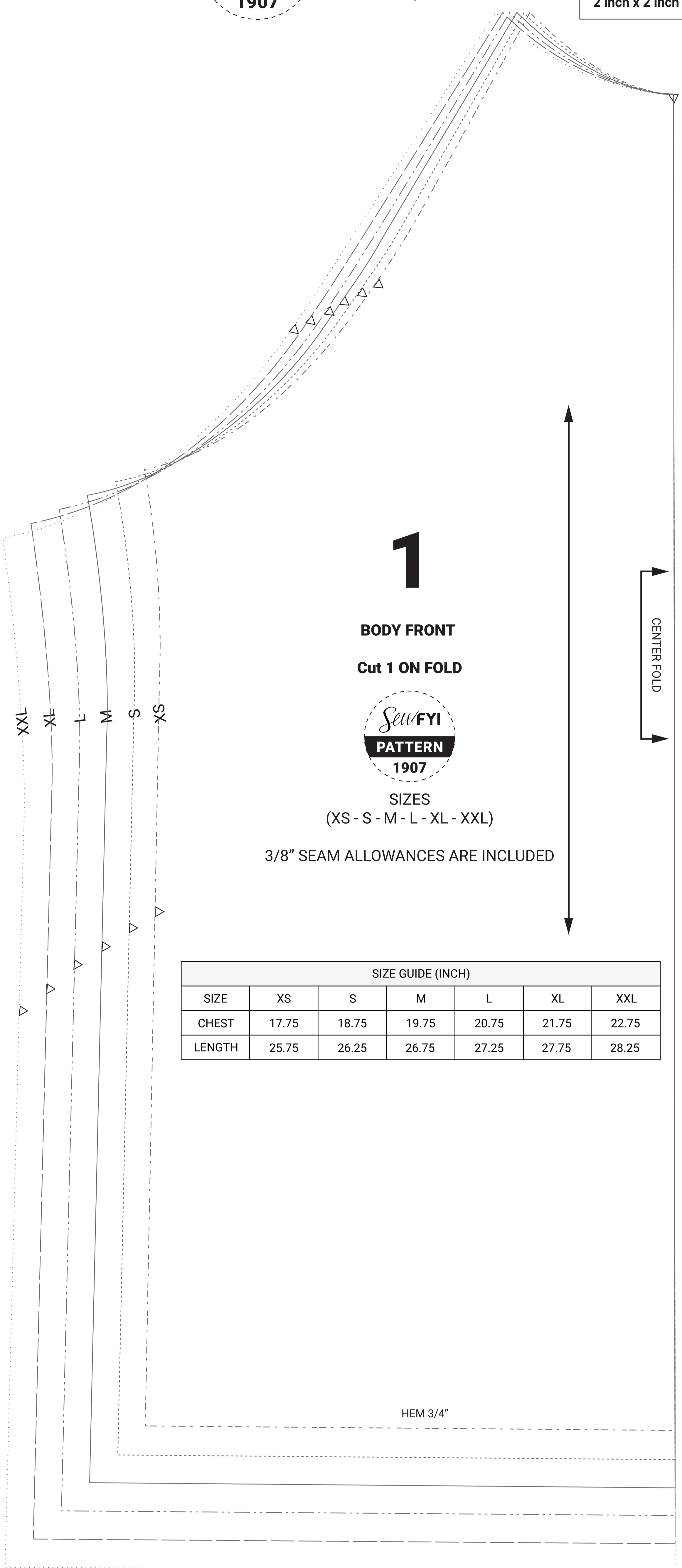


**Unisex Hoodie Raglan Tee Shirt Sleeveless**

- Materials:**  
 1. Suggested fabric: Jersey or Interlock  
 2. 2 1/2" Eyelets  
 3. 1/2" Drawstrings

**Test Square**

Check this box  
measures  
**2 inch x 2 inch**



**1**

**BODY FRONT**  
Cut 1 ON FOLD

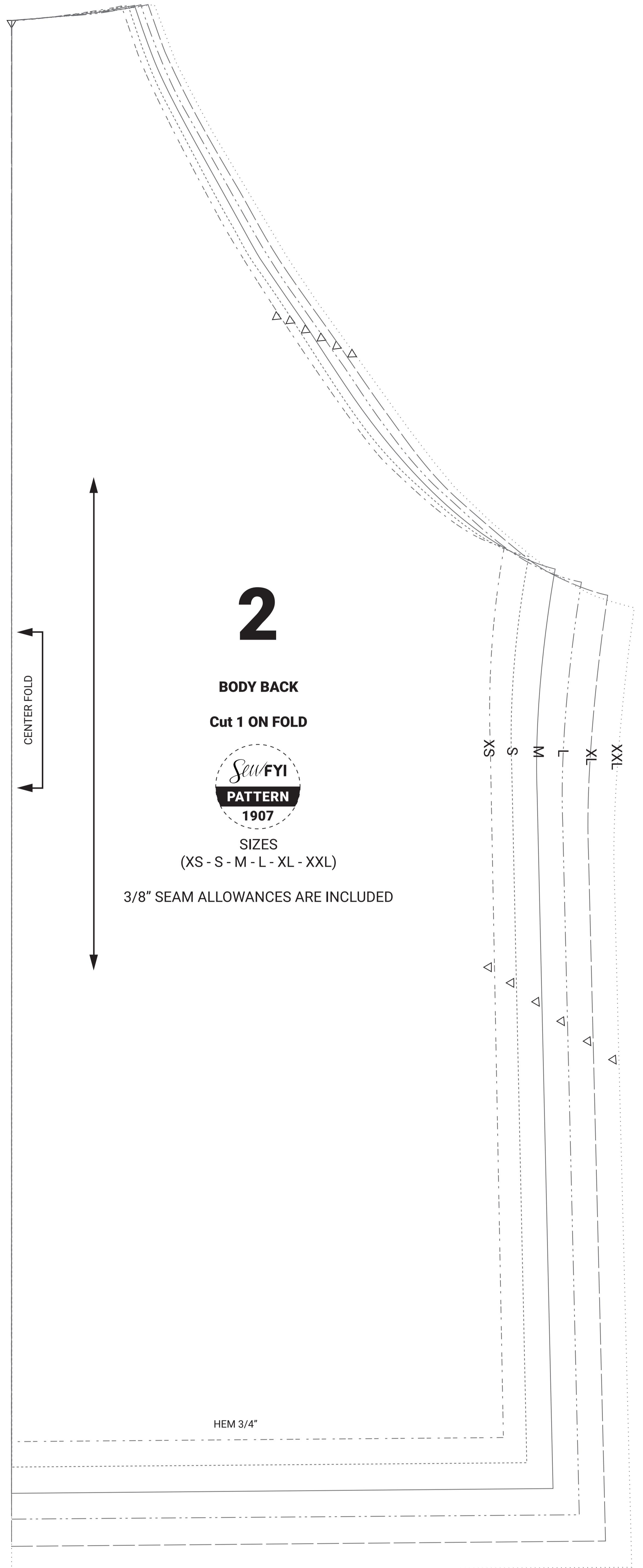


SIZES  
(XS - S - M - L - XL - XXL)

3/8" SEAM ALLOWANCES ARE INCLUDED

SIZE GUIDE (INCH)						
SIZE	XS	S	M	L	XL	XXL
CHEST	17.75	18.75	19.75	20.75	21.75	22.75
LENGTH	25.75	26.25	26.75	27.25	27.75	28.25

HEM 3/4"



**2**

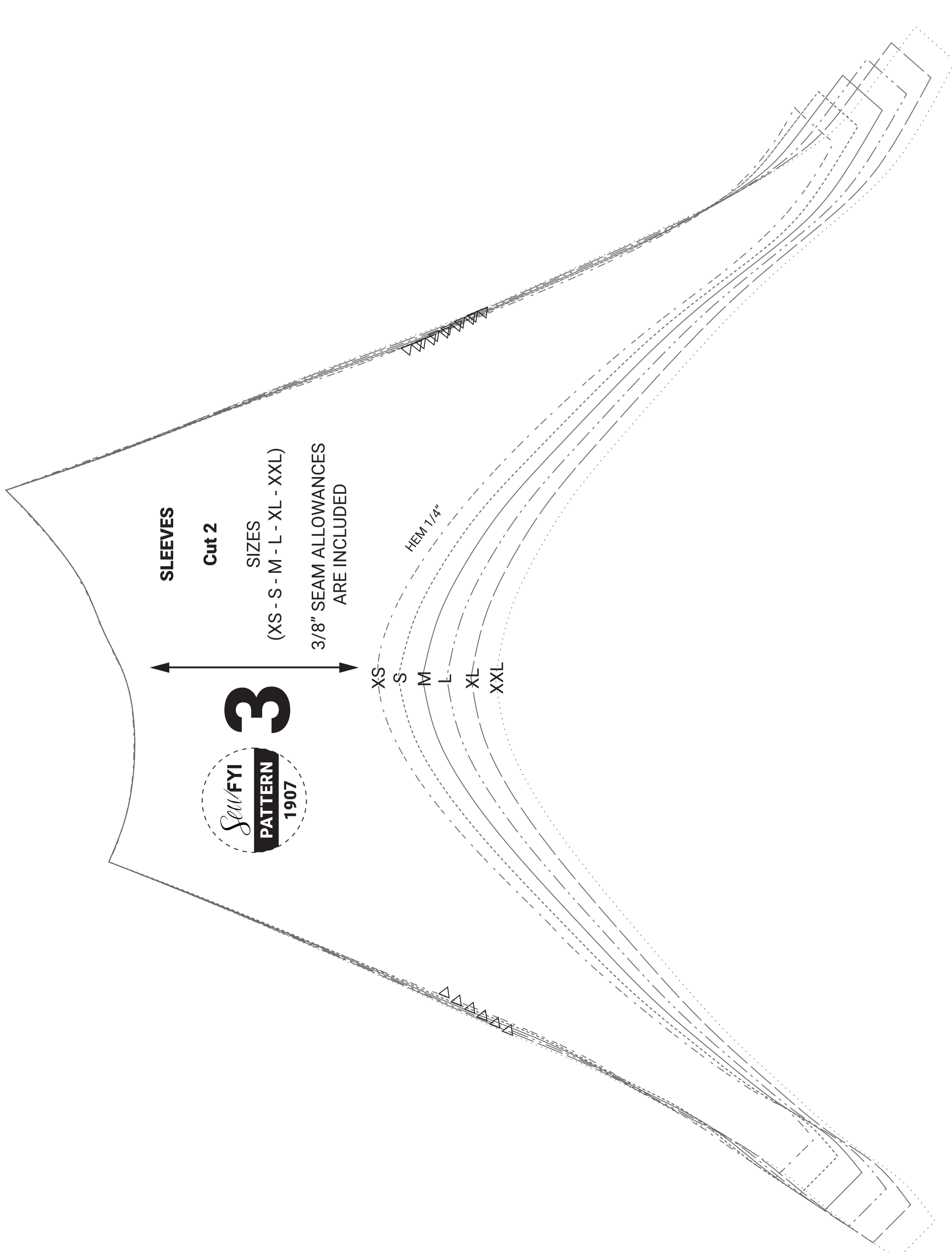
**BODY BACK**  
Cut 1 ON FOLD



SIZES  
(XS - S - M - L - XL - XXL)

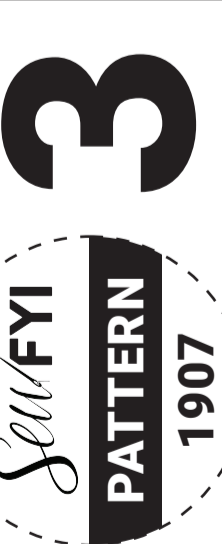
3/8" SEAM ALLOWANCES ARE INCLUDED

HEM 3/4"



**SLEEVES**

Cut 2

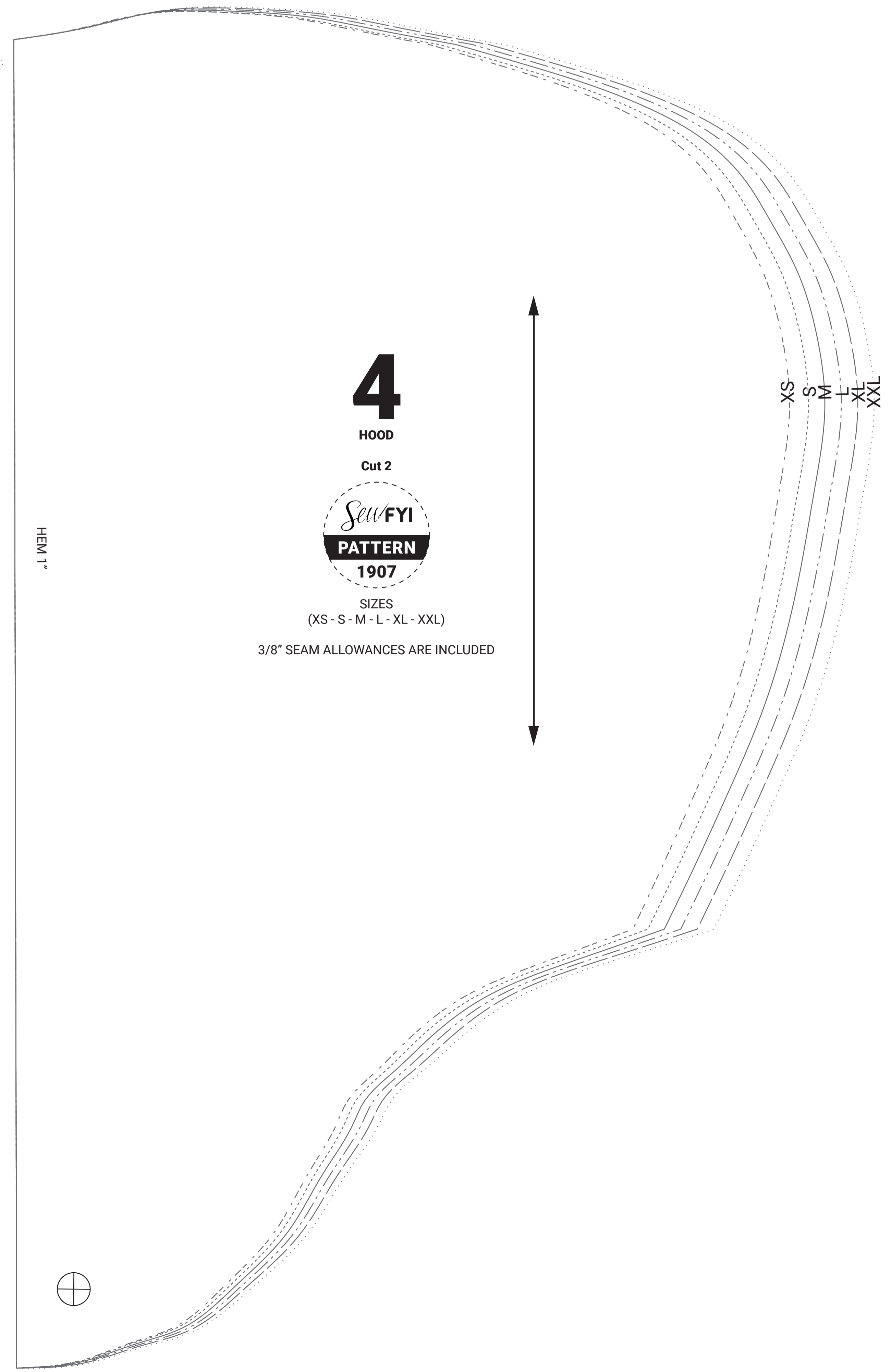


SIZES  
(XS - S - M - L - XL - XXL)

3/8" SEAM ALLOWANCES ARE INCLUDED

HEM 1 1/4"

XS S M L XL XXL



**4**

**HOOD**

Cut 2



SIZES  
(XS - S - M - L - XL - XXL)

3/8" SEAM ALLOWANCES ARE INCLUDED

HEM 1"

XS S M L XL XXL