



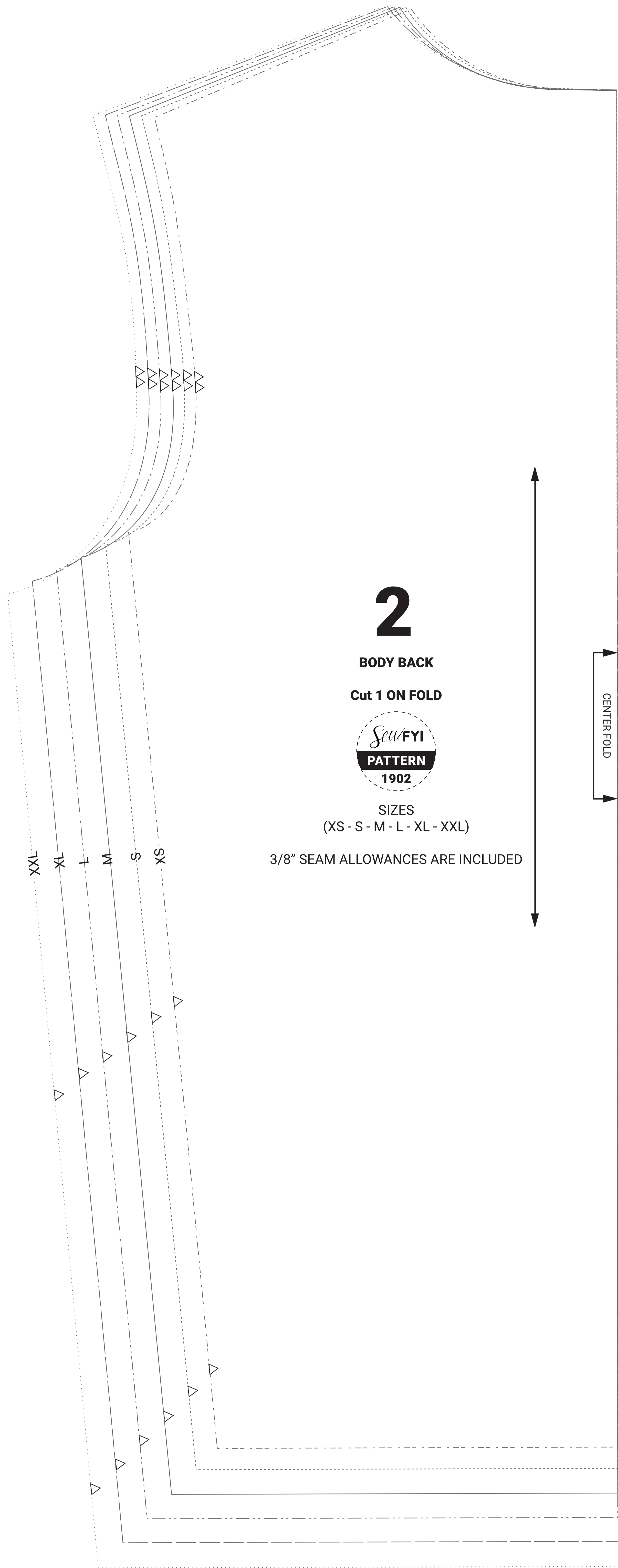
Unisex Oversize Hoodie Pullover LS

- Materials:**
1. Suggested fabric: Jersey or French Terry with 2x2 Ribs body cuff and sleeve cuffs
 2. 2 1/2" Eyelets
 3. 1/2" Drawstrings

Test Square

Check this box measures

2 inch x 2 inch



2

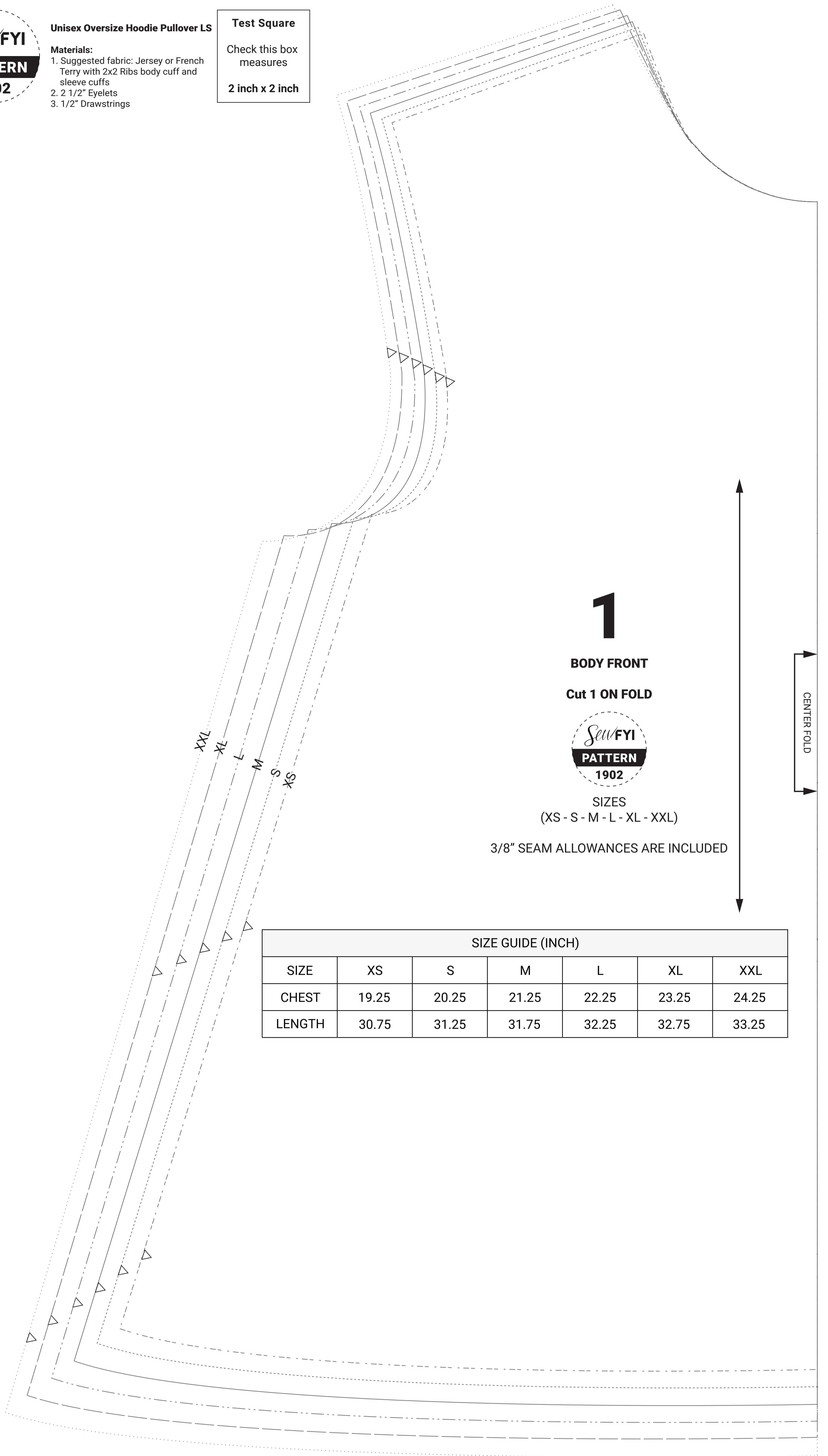
BODY BACK

Cut 1 ON FOLD



SIZES (XS - S - M - L - XL - XXL)

3/8" SEAM ALLOWANCES ARE INCLUDED



1

BODY FRONT

Cut 1 ON FOLD

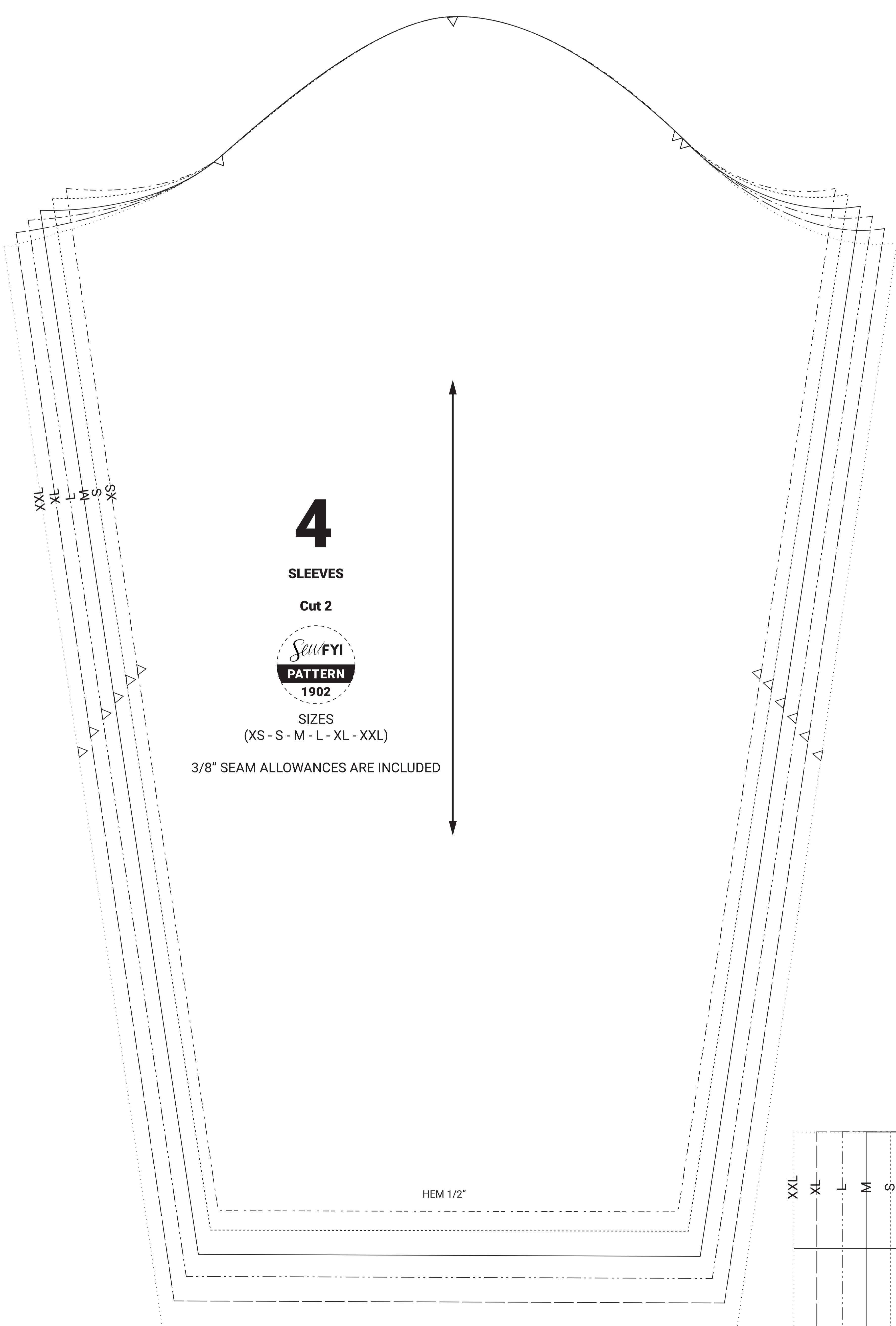


SIZES (XS - S - M - L - XL - XXL)

3/8" SEAM ALLOWANCES ARE INCLUDED

SIZE GUIDE (INCH)

SIZE	XS	S	M	L	XL	XXL
CHEST	19.25	20.25	21.25	22.25	23.25	24.25
LENGTH	30.75	31.25	31.75	32.25	32.75	33.25



4

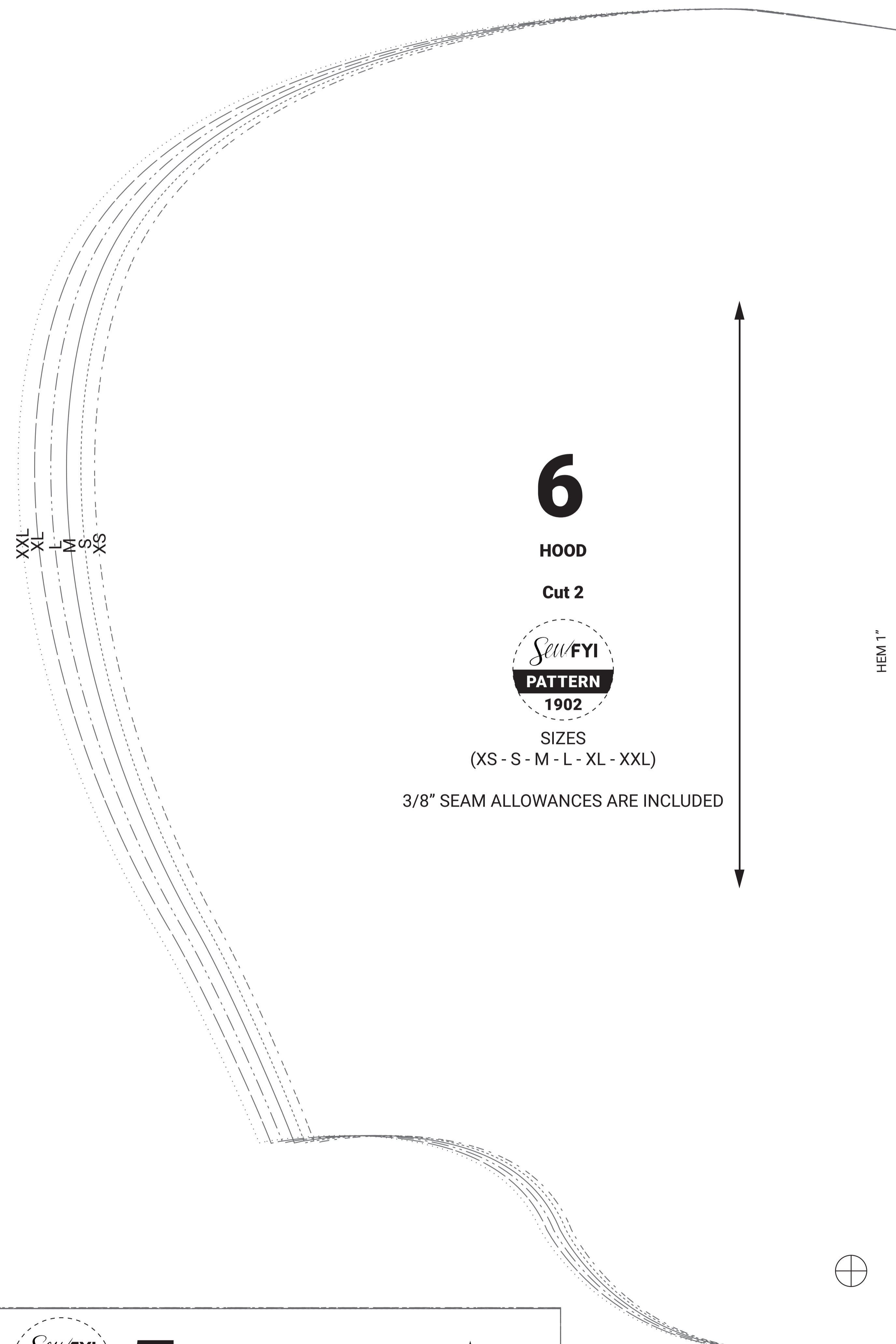
SLEEVES

Cut 2



SIZES (XS - S - M - L - XL - XXL)

3/8" SEAM ALLOWANCES ARE INCLUDED



6

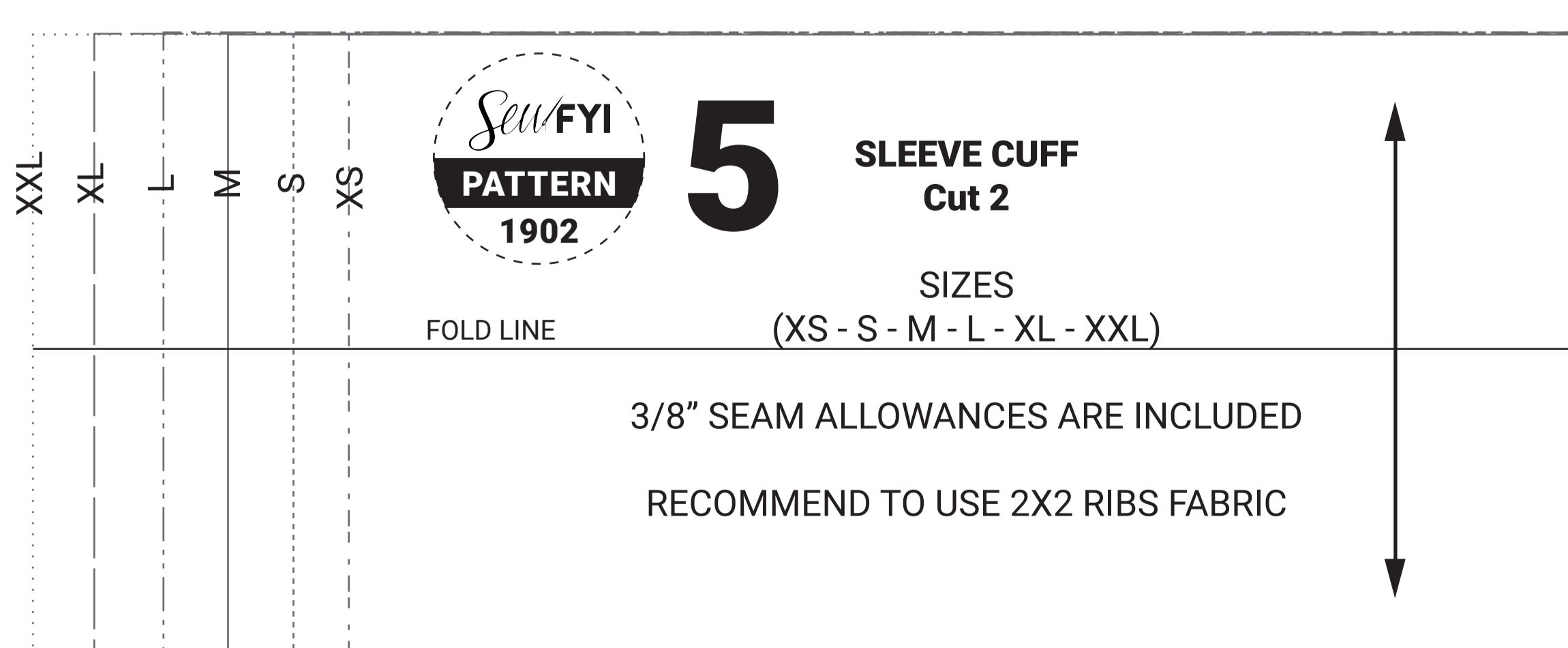
HOOD

Cut 2



SIZES (XS - S - M - L - XL - XXL)

3/8" SEAM ALLOWANCES ARE INCLUDED



5

SLEEVE CUFF

Cut 2

SIZES

(XS - S - M - L - XL - XXL)

3/8" SEAM ALLOWANCES ARE INCLUDED

RECOMMEND TO USE 2X2 RIBS FABRIC



3

BODY CUFF

Cut 2

SIZES

(XS - S - M - L - XL - XXL)

3/8" SEAM ALLOWANCES ARE INCLUDED

RECOMMEND TO USE 2X2 RIBS FABRIC